



IMPERIAL

BRICK TILES

AUTHENTIC FEATURE WALLS





CONTENTS

INTRODUCTION	4
APPLICATIONS	5
PRODUCT RANGE	
IMPERIAL BRICK TILES	6
GLAZED BRICK TILES	13
FEATURE WALL WOOD PANELS	19
LIME POINTING MORTAR	22
ABOUT IMPERIAL BRICKS	23
MANUFACTURING PROCESS	24
BRICK TILE INSTALLATION GUIDE	27
FEATURE WALL WOOD PANEL INSTALLATION GUIDE	30

AUTHENTIC FEATURE WALLS OF UNRIVALLED QUALITY

Brick Tiles offer a quick and easy way to bring the look and feel of an authentic exposed brick wall to any project.

Widely used in homes, shops, restaurants, pubs and bars both internally and externally, Brick Tiles add character and charm to any environment.

Designed and developed exclusively by Imperial Bricks, the UK's leading supplier of genuinely handmade, wirecut and pressed bricks, this unique range of Brick Tiles is the perfect way to create the highly desirable exposed brick feature wall appearance.

Our Brick Tiles begin their life as full imperial-sized bricks which are manufactured using time-honoured traditional techniques. We then cut the face off the brick, which gives each tile its individuality and authentic texture.

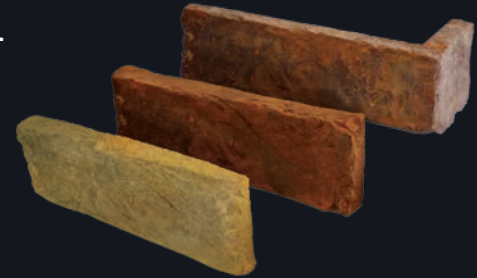
Every product in our growing and innovative collection offers an authentic reclaimed appearance which is only available from Imperial Brick Tiles.



APPLICATIONS

A highly attractive and cost-effective alternative to laboured brickwork, Brick Tiles offer the ideal solution to replicating the timeless elegance of traditional brickwork.

Our Brick Tiles are approx. 15-20mm in depth, and available with matching Brick Tile corners for complete coverage.



KEY BENEFITS:

- ✓ Easy & quick to install
- ✓ Perfect retrofit solution
- ✓ Uses less material
- ✓ No bricklayer necessary
- ✓ Suitable for DIY enthusiasts

PERFECT FOR:

- ✓ Home Improvement
- ✓ Hospitality & Leisure Interiors
- ✓ Interior & Exterior Use
- ✓ Retail Stores & Shopfitting
- ✓ Commercial Buildings

IMPERIAL BRICK TILES

We have selected our most popular regional styles to create this exclusive range of Imperial Brick Tiles, which offer authentic feature walls to complement any project.

If you are unsure about which finish is best for your project, get in touch with our experts who can advise a suitable Brick Tile to match your specific requirements.



VICTORIAN PRESSED

Mirroring the regional 'reclaimed' style pressed brick often seen around the Midlands and North, this Brick Tile has a characteristic red and orange base, pale flashings and dark overburns, with each face offering a distinctive and naturally weathered appearance.

DIMENSIONS:

230 x 73 x 20mm

PACK SIZE:

25

PRODUCT CODE:

V-PRES-B/T

Matching corners also available



VICTORIAN FARMHOUSE

A traditional handmade Brick Tile with a naturally weathered and 'reclaimed' finish, these bricks were historically used throughout middle England in the 'Shire Counties' to build farmhouses, barns and period country properties. This Brick Tile offers a rustic and charming rural farmhouse appearance.

DIMENSIONS:

230 x 73 x 20mm

PACK SIZE:

25

PRODUCT CODE:

V-F0-B/T

Matching corners also available



VICTORIAN WAREHOUSE

A genuinely handmade Brick Tile with warm orange tones, featuring a 'sandblasted' finish often seen in converted lofts and warehouses. Sandblasting was commonly used to remove old paint from bricks and masonry, which leaves the brick with a smoother surface.

DIMENSIONS:

230 x 68 x 15mm

PACK SIZE:

50

PRODUCT CODE:

V-WHSE-B/T

Matching corners also available



VICTORIAN LONDON STOCK

A high quality handmade yellow Brick Tile with some overburns. The Victorian London Stock is manufactured identically to the reclaimed handmade bricks seen in London and the surrounding counties and is a very popular brick style for this region.

DIMENSIONS:

230 x 68 x 15mm

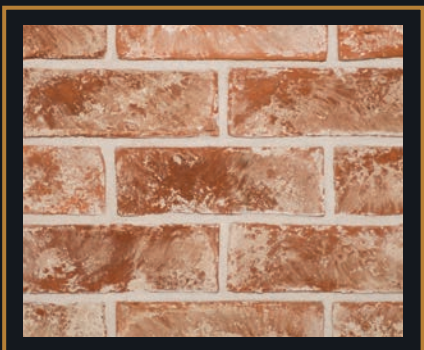
PACK SIZE:

25

PRODUCT CODE:

V-LSTK-B/T

Matching corners also available



VICTORIAN LIMEWASHED

An authentic handmade Brick Tile with a popular 'limewashed' finish, which is often seen on genuine reclaimed bricks as this was a traditional way to paint surfaces historically.

DIMENSIONS:

230 x 75 x 15mm

PACK SIZE:

50

PRODUCT CODE:

V-LWSH-B/T

Matching corners also available



VICTORIAN CRACKLE GLAZED - WHITE

A highly desirable and exclusive crackle glazed finish completely unique to Imperial Brick Tiles. Historically found throughout underground train stations and basement rooms of period properties to bring in natural light, glazed tiles offer the added appeal of an imperial sized reclamation-style brick.

DIMENSIONS:

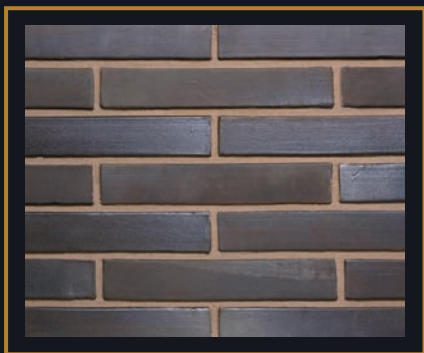
230 x 73 x 15mm

PACK SIZE:

45

PRODUCT CODE:

V-GLAZ-B/T



DESIGNER LINEAR - METALLIC BLUE

A very stylish linear size Brick Tile with a striking and distinctive metallic pearlescent finish. Originating from the historical Roman era, linear is now considered to be an ultra-modern size brick which offers a contemporary look.

DIMENSIONS:

300 x 50 x 15mm

PACK SIZE:

30

PRODUCT CODE:

METBLU-B/T

Matching corners also available







GLAZED BRICK TILES

These distinctly individual, handmade artisan Glazed Brick Tiles provide an elegant and stylish option for residential and commercial interiors.

Each piece is handcrafted by skilled craftspeople, before being coated in a specialist glaze and fired in the kilns, producing a softly undulating and tactile surface with rustic edges, forming the beautiful character of the product.

Available in a traditional imperial brick size and specially selected vibrant colour palette inspired by the natural precious minerals of our Earth, each Glazed Brick Tile has a unique finish.





AMAZONITE

A handmade artisan Glazed Brick Tile in an attractive turquoise blue colour with unique and distinctive patterning and texture on the face.

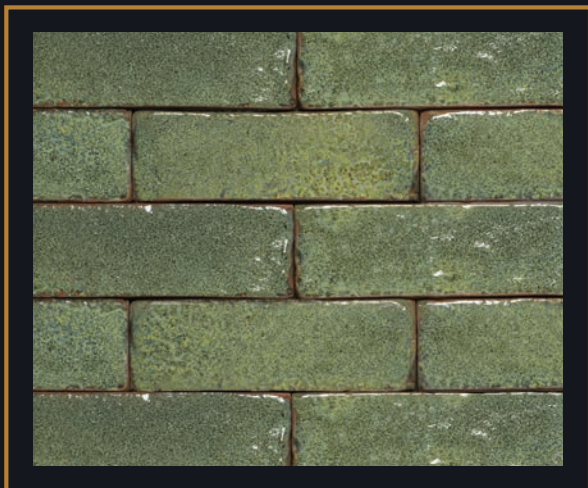
DIMENSIONS:	215 x 75 x 20mm
PACK SIZE:	44
COVERAGE:	54 pieces/m2
PRODUCT CODE:	DSG-AMA/75



AZURITE

A beautiful ocean blue handmade artisan Glazed Brick Tile with a distinguishing finish created during the natural glazing and firing process.

DIMENSIONS:	215 x 75 x 20mm
PACK SIZE:	44
COVERAGE:	54 pieces/m2
PRODUCT CODE:	DSG-AZU/75



JADE

A jade green handmade artisan Glazed Brick Tile with an alluring textured face and pale green hues throughout.

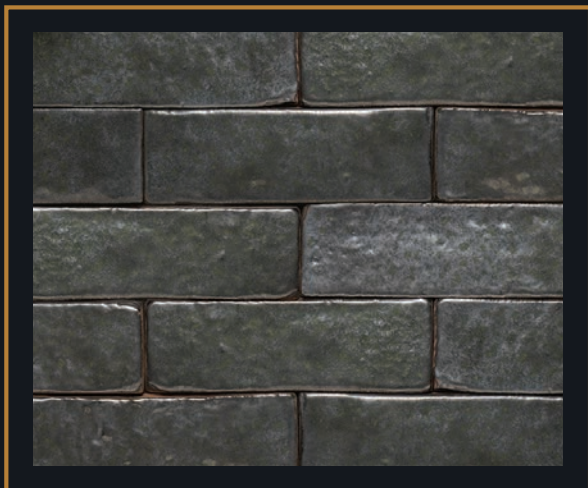
DIMENSIONS:	215 x 75 x 20mm
PACK SIZE:	44
COVERAGE:	54 pieces/m2
PRODUCT CODE:	DSG-JAD/75



ONYX

A stunning deep midnight blue handmade artisan Glazed Brick Tile with a captivating textured surface.

DIMENSIONS:	215 x 75 x 20mm
PACK SIZE:	44
COVERAGE:	54 pieces/m2
PRODUCT CODE:	DSG-ONY/75



PYRITE

A metallic-effect silver/grey handmade artisan Glazed Brick Tile with attractive earthy green hues throughout.

DIMENSIONS:	215 x 75 x 20mm
PACK SIZE:	44
COVERAGE:	54 pieces/m2
PRODUCT CODE:	DSG-PYR/75



RUBY

A vibrant ruby red handmade artisan Glazed Brick Tile which features characteristic shade variations and a uniquely textured face.

DIMENSIONS:	215 x 75 x 20mm
PACK SIZE:	44
COVERAGE:	54 pieces/m2
PRODUCT CODE:	DSG-RUBY/75

STYLE YOUR TILE

If you're looking for something more unusual, bespoke Glazed Brick Tiles can also be custom made to your requirements.

A popular choice for clients wanting to make a dramatic design statement, bespoke Glazed Brick Tiles offer an excellent choice for feature walls and external cladding.

We can match from any RAL colour, with a rustic handmade or contemporary smooth gloss finish.

✓ Beautiful Finishes

✓ Stain Resistant

✓ Colourfast

✓ Weatherproof

✓ Interior & Exterior Use

Get in touch for more details or to discuss your project requirements.





FEATURE WALL WOOD PANELS

Create tactile statement interiors with the Feature Wall Wood Panel collection.

Interior walls and other surfaces can be transformed quickly and easily with our innovative, three dimensional interlocking, pre-sealed wooden wall panels. Offering a charming, rustic reclaimed timber finish, our Feature Wall Wood Panels will create superlative interiors with a warm ambience.

Individual pieces of timber are randomly selected and bonded onto a backing material for ease of application. This production process results in natural colour variation within each panel.

Made from FSC certified sustainable wood sources and perfectly engineered in a Z-shape to fit together seamlessly, these on trend wall panels are available in a range of attractive colours which bring the natural beauty and texture of real wood into an easy to install format.



ANTIQUE BLACK

A warm multi tonal blend of darker brown shades with a rustic, reclaimed style finish.

DIMENSIONS:

610mm x 150mm

COVERAGE:

11 pieces/m2

PRODUCT CODE:

IWP-BAW/Z



ANTIQUE GREY

A highly attractive, unique blend of pale to mid greys, blues and rich brown highlights.

DIMENSIONS:

610mm x 150mm

COVERAGE:

11 pieces/m²

PRODUCT CODE:

IWP-GAW/Z



ANTIQUE NATURAL

An alluring blend of natural, rustic reclaimed timber shades.

DIMENSIONS:

610mm x 150mm

COVERAGE:

11 pieces/m²

PRODUCT CODE:

IWP-APW/Z



ANTIQUE CHARCOAL

Rich browns and charcoal shades in a unique blend, with a subtle scorched wood effect.

DIMENSIONS:

610mm x 150mm

PACK SIZE:

11 pieces/m2

PRODUCT CODE:

IWP-CPS/Z



ANTIQUE COCKTAIL

An eclectic mix of white, blue, beige and dark brown shades.

DIMENSIONS:

610mm x 150mm

PACK SIZE:

11 pieces/m2

PRODUCT CODE:

IWP-LCA/Z

LIME POINTING MORTAR

Developed in partnership with Limetec, our Heritage range of hydraulic lime mortar offers an authentic solution to period property renovation, and works perfectly with new builds.

Our lime mortar also offers a quick and easy way to point a Brick Tile wall. The mortar can be applied by hand using traditional techniques, or with a mortar pointing gun, drastically reducing the time required.



**JUST ADD
WATER**

Hydraulic Lime Mortar

If using traditional methods

Our Heritage range of hydraulic lime mortar can be used to point the joints using a pointing tool, and is available in six colours.



**JUST ADD
WATER**

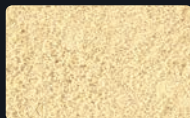
Limepoint

If using a pointing gun

Our Limepoint mortar has been specifically designed and engineered to work with modern mortar guns or bag injection. Limepoint is available in the most popular Natural and Traditional London colours.



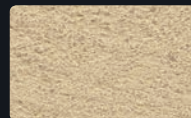
NATURAL



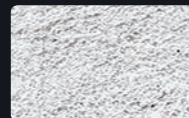
TRADITIONAL LONDON



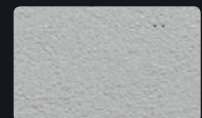
COTSWOLD



PADSTOW BROWN



GLASGOW GREY



CAMBRIDGE DARK
GREY

Find out more: www.imperialbricks.co.uk

ABOUT IMPERIAL BRICKS

As the market-leading suppliers of the finest traditional handmade, wirecut and pressed bricks, Imperial Bricks specialises in producing a growing range with a strong focus on regional variations, in standard and reclamation finishes.

Using traditional manufacturing methods, our skilled brickmakers expertly reproduce authentic colours and textures, which makes the bricks perfect for the restoration, renovation and conservation of period properties, whilst offering an authentic look for new build projects.

Our Brick Tiles are available in many other colours and textures, from our extensive range of over 50 bricks, with complementary products also available:

- Traditional imperial sizes
- Standard and reclamation finishes
- Bespoke blends and custom weathering
- Tailor-made solutions
- Heritage Lime Mortar in 6 authentic regional colours
- Brick Tiles are available from the complete Imperial Bricks range for internal use and external cladding



MANUFACTURING PROCESS

1

A 'clot' of roughly shaped clay is prepared and thrown by hand into a wooden mould dusted with dry, fine sand. Excess clay is removed with a wire bow and a flat wooden pallet is placed on top, with the mould being inverted to remove the brick.

2

These bricks – known as 'green' bricks – are then stacked and left to air dry, creating the unique creases or 'smiles' on each brick face

3

The green bricks are then carefully stacked by hand into a coal fired kiln, where the temperature is gradually increased.

4

The colour and texture of fired bricks depend on the minerals in the clay and kiln temperatures. Pink bricks contain more iron, while bricks with yellow tones are produced from clay with a higher lime content. As the kiln temperature increases, the bricks undergo a spectrum of changes; red bricks will darken to a purple tone, then turn brown or grey at around 1300°C.

5

After firing, the bricks are cooled in the chamber.

6

The face of the brick is then cut off to produce our unique Brick Tiles, each with its own individual character and appeal.

HANDMADE USING TIME-HONOURED METHODS

As experts in this field, we know the quality and character of a handmade brick cannot be mass-produced; it's the little imperfections created during the process that makes each brick unique.

To get a really special product takes real craftsmanship and our brickmakers have the skills and experience required to create superior products in the traditional way.

We make our handmade bricks using methods dating back to the 15th century.





BRICK TILE INSTALLATION GUIDE

Our Brick Tiles are incredibly easy to install with the correct tools and careful planning. Just follow our simple step-by-step instructions.

For help and guidance, including recommended products to use with Imperial Brick Tiles, please visit our website:

🖱️ www.imperialbricktiles.co.uk

You Will Need:

- ✓ Brick Tiles of your choice
- ✓ Flexible tile adhesive
- ✓ Bucket
- ✓ Mixing drill attachment or hand mixer
- ✓ Limepoint Pointing Mortar (recommended)
- ✓ Pencil
- ✓ 10mm T Shaped tile spacers (recommended)
- ✓ Marshalltown Brick Jointer (recommended)
- ✓ Adhesive trowel
- ✓ Spirit level
- ✓ Pointing mortar gun (recommended)
- ✓ Matt finish sealant (optional)
- ✓ Brush
- ✓ Sponges and water
- ✓ Tape measure

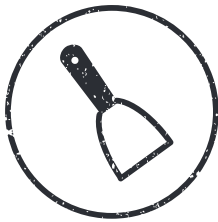
SIX SIMPLE STEPS

1. SURFACE PREP

Remove any loose paint or plaster and repair any flaking surfaces. Dust down the prepared surface and remove any grease or dirt.

Seal the surface with a suitable primer if required.

Mark out level lines using a spirit level on the blank wall surface.



2. ADHESIVE APPLICATION

Following the manufacturer's instructions, mix the tile adhesive to the desired consistency. Once mixed, start applying the adhesive to the surface using an adhesive trowel, choosing an area you can cover quickly. Use large sweeping strokes to ensure consistent coverage.



3. FITTING BRICK TILES

Apply the first course of Brick Tiles to the surface in the desired pattern, cutting in where necessary. Remember to add spacers in between all courses.

Corner tiles can be used to fit around reveals and chimneys. Complete the works whilst the adhesive is still workable.



All adhesives, sealants and grouts must be used in accordance with manufacturer guidelines.

FREE Video Tutorial

Prefer a hands-free approach? Why not follow our **FREE** video tutorial which talks you through the installation process step by step, along with some helpful hints and tips too!

4. SEALANT (OPTIONAL)

Once all of the tiling is complete and the adhesive has dried, you may wish to add a first coat of sealant to protect the Brick Tiles (this is optional – but recommended especially in kitchen areas to avoid any grease splashes or marks). Ensure the tiles are clean, dry and free of dust before the sealant is applied with a brush.



5. POINTING

Following the manufacturer's instructions, mix the pointing mortar to the desired consistency.

Add mortar into the pointing gun and apply the mortar into the joints, then strike off the excess using the jointing tool to the desired finish.



6. FINISHING

Once the area is pointed and dry, ensure the slips are clean, dry and free of dust.

Apply a final coat of sealer to protect the surface of the brickwork if required.



You Tube

Scan me!



FEATURE WALL WOOD PANEL INSTALLATION GUIDE

Suitable for indoor applications, Feature Wall Wood Panels are light and durable, supplied in boxed packaging, and incredibly easy to install for professional or DIY installation, following the simple step-by-step instructions below.

The decorative wooden strips are bonded to a backing material and the interlocking design of each panel ensures they fit seamlessly together.



You Will Need:

- ✓ Small saw
- ✓ Sander
- ✓ Sprit level
- ✓ Recommended adhesive such as instant grab silicone (for use in glass, windows, ceramics etc) or MS adhesive.

Storage

The product should be stored in a horizontal position, stacked to a maximum of ten boxes. Must be stored in a dry environment, preferably on a pallet.

Note

Our Feature Wall Wood Panels are 100% natural and are made using a manual production process. Each panel is unique and offers characteristic variations in colour and patina, which is part of the natural charm of this mosaic.

Maintenance & Cleaning

Panels are easy to maintain. They can be wiped with a damp cloth, or using a neutral detergent diluted with water.

SEVEN SIMPLE STEPS

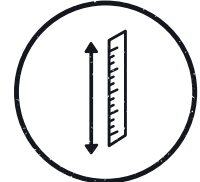
1. PRODUCT PREP

Open the boxes for 24 hours before installation to let the Feature Wall Wood Panels adapt to the temperature and humidity where they will be installed.



2. MEASURE

Calculate the surface area to be covered.



3. SURFACE PREP

Remove any loose paint or plaster and repair any flaking surfaces. Dust down the prepared surface and remove any grease or dirt.



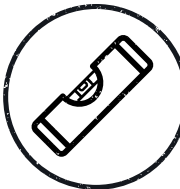
4. ADHESIVE APPLICATION

Apply the recommended adhesive to the back of the panel's surface evenly.



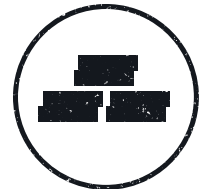
5. FITTING

Offer the first panel up to the fitting surface and confirm it is square and level, then press it firmly for 5 seconds to ensure the entire panel is flat against the surface. This is necessary to avoid any bulging. A headless panel pin can also be used if the wall is slightly uneven.



6. ALIGNMENT

To fit the next panel, make sure that its position is aligned with the previous one using the interlocking design.



7. FINISHING

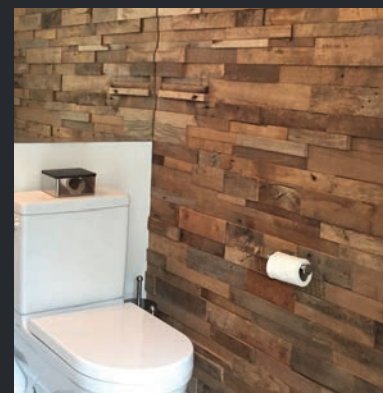
If panels need to be cut down to size, simply tear along a glued joint, then use a saw to cut the wood to the required size. Any rough edges can be smoothed with a sander if desired.



Important

If using nails or pins to fix the panels, you must ensure there are no hidden pipes or electric cables/fittings.

All adhesives, sealants and grouts must be used in accordance with manufacturer guidelines.



IMPERIAL

BRICK TILES

AUTHENTIC FEATURE WALLS

☎ 01952 750 816

✉ sales@imperialbricktiles.co.uk

🖱 www.imperialbricktiles.co.uk

Imperial Brick Tiles
Grindle House Farm
Grindle Road
Grindle
Near Shifnal
Shropshire
TF11 9JR

Imperial Brick Tiles is a trading style of Imperial Bricks Ltd